



Town of Fairfield Parks & Recreation Master Plan Public Workshop #2 - 3.30.2022



BL Companies, Inc. • Horsley Witten Group, Inc. • Parks and Recreation Master Plan



Introductions – BL and HW Team



MICHAEL MOONAN, PLA, LEED AP
SR. PROJECT MANAGER
BL COMPANIES



CRAIG PEREIRA, CFM, NCI
SENIOR PLANNER
HORSLEY WITTEN GROUP



KELLIE KING
ENVIRONMENTAL PLANNER
HORSLEY WITTEN GROUP



Wayne Violette, PLA
SR. LANDSCAPE ARCHITECT
BL COMPANIES



Krista Moravec, AICP
SENIOR PLANNER
HORSLEY WITTEN GROUP



BL Companies Overview

Founded in 1986

230+ Connecticut Employees

Offices in Hartford and Meriden

100% Employee-Owned Firm (ESOP)

Diverse Public & Private Clients



Architecture
Engineering
Environmental
Land Surveying

355



BL Companies, Inc. • Horsley Witten Group, Inc. • Parks and Recreation Master Plan



BL Companies Overview

CORE SERVICES

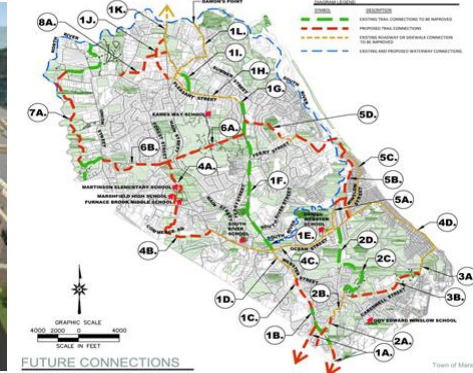
- Architecture
- Engineering
- Environmental
- Land Surveying

MAJOR SERVICES

- Landscape Architecture & Planning
- Architecture
- Sports Facility Design
- Civil / Site Engineering
- GIS / Base Mapping
- Construction Engineering and Inspection
- Transportation & Infrastructure Engineering
- MEP Engineering
- Structural Engineering
- Environmental Resources & Site Assessment



Relevant Experience | BL Companies



- **Community Services Parks Master Plan** | East Greenwich, RI
- **Playground & Open Space Recreation Assessment** | Wareham, MA
- **Comprehensive Trails Plan** | Marshfield, MA
- **JABS All Sports Village** | Windsor Locks, CT
- **Acorn Hill Recreation Fields** | Woodbridge, CT
- **BAR Planning Study** | Torrington, CT
- **Soccer Fields Relocation Study** | Meriden, CT
- **Farquhar Park Expansion** | Groton, CT



COMPREHENSIVE/MASTER PLANNING

LAND USE PLANNING

CLIMATE ADAPTATION/RESILIENCY PLANNING

PARKS AND RECREATION NEEDS ANALYSES

PARKS CONDITIONS ASSESSMENTS

OPEN SPACE AND RECREATION PLANS

RECREATION MASTER PLANS

STATEWIDE COMPREHENSIVE OUTDOOR RECREATION PLANS

COMMUNICATIONS

- Project Webpage/Websites
- Public Participation Plan
- Facebook/Social Media
- Eblasts
- Feedback Loops
- Local Media

ANALYSIS/RESEARCH

- Review of Existing Plans, Studies and Reports
- Comparative Analyses
- Pedestrian/Bicycle Connectivity
- Level of Service GIS Analysis

PUBLIC OUTREACH/ENGAGEMENT

- Project Webpage/Website
- Survey 123
- Athletic Facility Users Survey
- Community Survey
- Interviews/Focus Groups
- Onsite Pop-Ups
- Public Forums/Design Charrettes



Relevant Experience | Horsley Witten Group

STATEWIDE COMPREHENSIVE OUTDOOR RECREATION PLAN COMMONWEALTH OF THE NORTHERN MARIANA ISLANDS



OVERVIEW ABOUT THE SCORP RESOURCES & DOCUMENTS CNMI SCORP OUR TEAM GET INVOLVED CONTACT US

Get Involved

USE THE FORM BELOW TO ASK ANY QUESTIONS OR PROVIDE IDEAS.

Name *

Last Name

Email Address *

Subject *

Message *

What did we learn?

Navigate the map below to see a full inventory of outdoor recreation on CNMI. This includes information we gathered from site evaluations and photos. Click the '+' button to zoom in and then use the "hand" tool to pan to the location you're interested in. Click on any of the green "pins" to read the inventory entries for each site (identification of amenities, conditions assessment, ADA access assessment and view photos).

Island	Saipan
Site Name	Jeffrey's Beach
Site Location	Talofofo
Site Type	Active
Baseball	No
Basketball	No



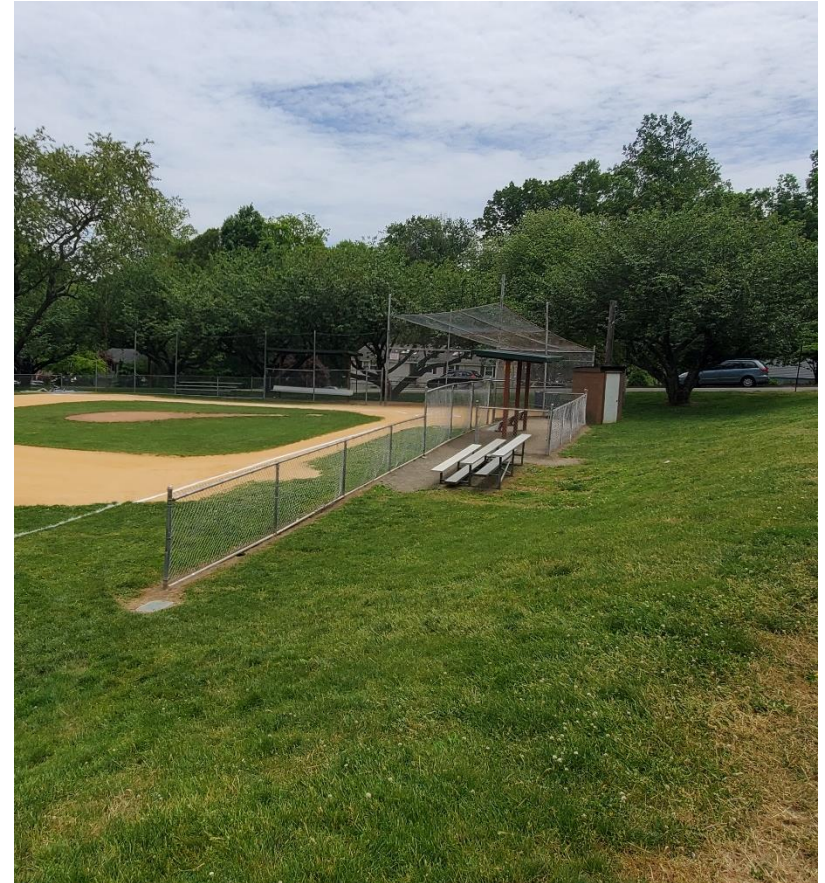
What Creates a Strong Preferred Plan?

- Defining Goals & Objectives of the Plan
- Thoroughly Assessing Existing Facilities/ Programs
- Developing a Needs Assessment
- Listening to the Community
- Identifying the “Wants” and “Needs” of the Community
- Identifying the Risks Associated with the Current Conditions
- Preparing a Comprehensive Set of Recommendations and an Implementation Strategy
- Getting Buy-In from the Community



Project Goals

- Inventory recreation facilities
- Confirm existing conditions
- Engage the public
- Establish recreation facility needs
- Develop a strategic plan to upgrade existing facilities and develop new facilities on a site-by site and town-wide basis
- Provide, safe, high-performing, gender equitable and multi-generational facilities
- Establish funding and phasing strategies

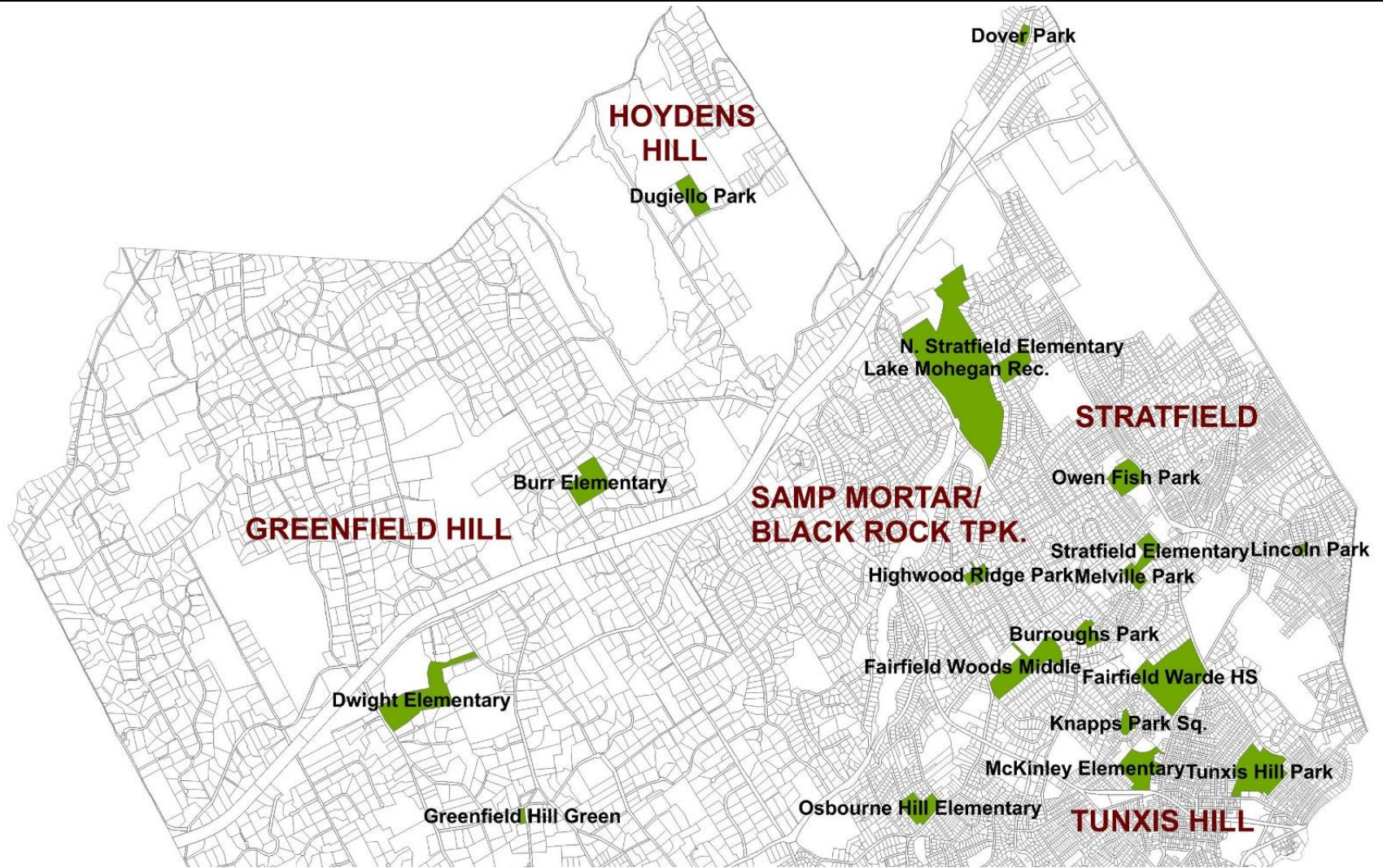


Specific Outcomes

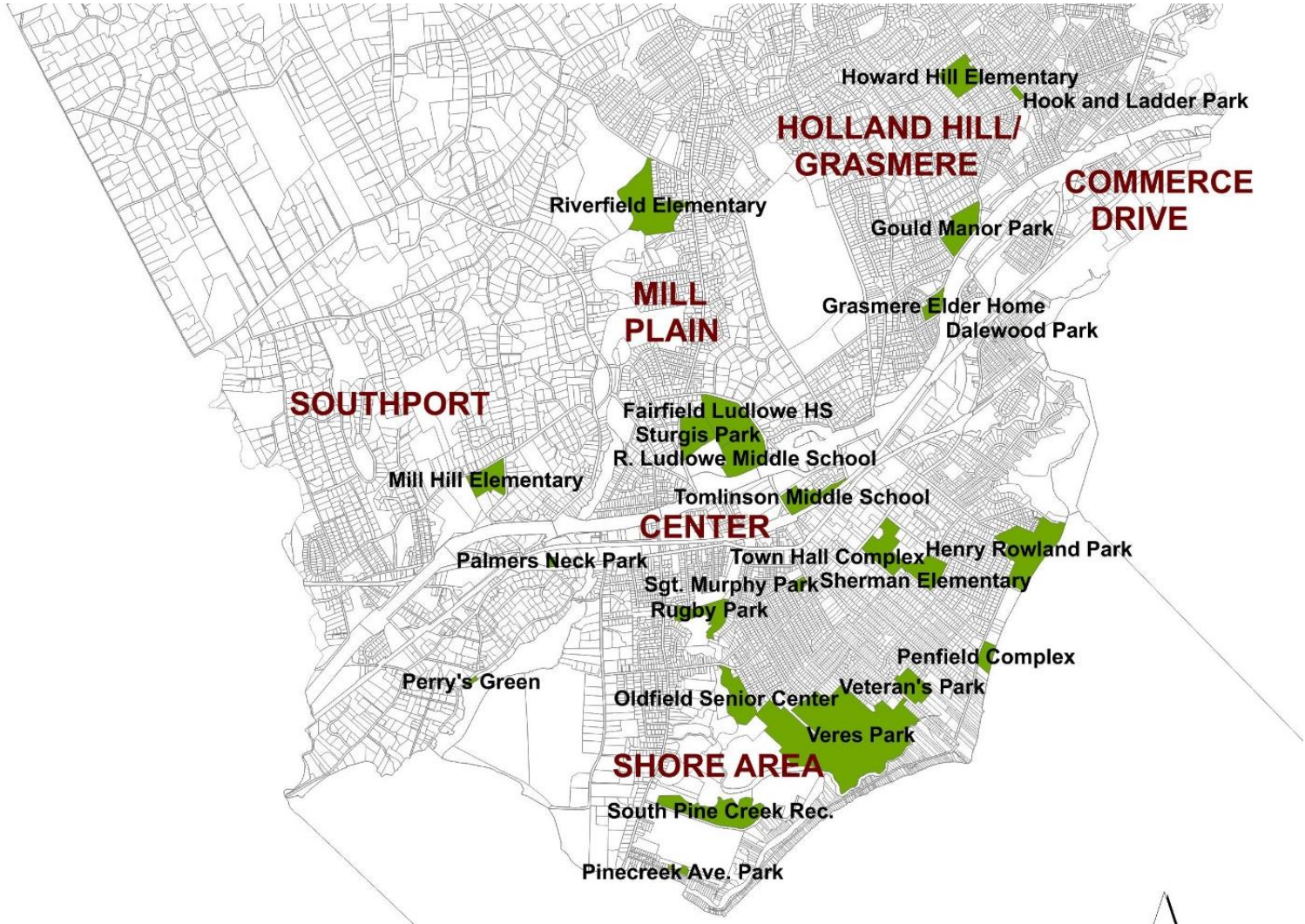
- Gain a better understanding of community needs
- Identify gaps of service, programming, and facilities not currently being met
- Identify future trends and bench marking through the National Recreation and Parks Association and other standards
- Create multiple park designs for future development and capture associated costs
- Address plans for deferred maintenance
- Define future Capital Improvement Projects as well as staffing/equipment needs to meet recreation and park objectives
- Guidance in the prioritization of projects
- Identify needs for current maintenance needs
- Identify risk verses benefit for natural turf field verses synthetic turf



Project Study Sites - Northern



Project Study Sites - Southern



Project Study Sites

PARK FACILITIES

BURROUGHS PARK

DALEWOOD PARK

DOUGIELLO PARK

DOVER PARK

DREW PARK

GOULD MANOR PARK

GRASMERE ELDERCARE PARK FACILITY

GREENFIELD HILL GREEN

HENRY ROWLAND PARK

HIGHWOOD PARK

HOOK AND LADDER PARK

KAROLYI PARK

KNAPPS PARK SQUARE

LAKE MOHEGAN

LINCOLN PARK

MELVILLE PARK

OLDFIELD SENIOR CENTER

OWEN FISH PARK

PALMER'S NECK

PENFIELD COMPLEX

PERRY'S GREEN

PINE CREEK AVE PARK

RUGBY PARK

SGT. MURPHY PARK

SHERMAN GREEN

S. PINE CREEK REC AREA

STURGES PARK

TOWN HALL COMPLEX

TUNXIS HILL PARK

VERES STREET PARK

VETERANS PARK



Project Study Sites

BEACHES AND MARINAS

JENNINGS BEACH

LAKE MOHEGAN

PENFIELD BEACH

RICKARDS BEACH

SASCO BEACH

SOUTH PINE CREEK BEACH

SOUTHPORT BEACH

PERRY'S GREEN

SOUTH BENSON MARINA

YE YACHT YARD



Project Study Sites

SCHOOL FACILITIES

BURR ELEMENTARY

DWIGHT ELEMENTARY

HOLLAND HILL ELEMENTARY

JENNINGS ELEMENTARY

MCKINLEY ELEMENTARY

MILL HILL ELEMENTARY

N. STRATFIELD ELEMENTARY

OSBORN HILL ELEMENTARY

RIVERFIELD ELEMENTARY

SHERMAN ELEMENTARY

STRATFIELD ELEMENTARY

FAIRFIELD WOODS MIDDLE SCHOOL

ROGER LUDLOWE MIDDLE SCHOOL

TOMLINSON MIDDLE SCHOOL

WALTER FITZGERALD CAMPUS

FAIRFIELD LUDLOWE HIGH SCHOOL

FAIRFIELD WARDE HIGH SCHOOL



Project Study Sites

OPEN SPACES AND CEMETERIES

ASH CREEK OPEN SPACE

BRETT WOODS OPEN SPACE

GRACE RICHARDSON OPEN SPACE

GYPSY SPRINGS OPEN SPACE

HOYDEN HILL OPEN SPACE

LAKE MOHEGAN OPEN SPACE

MARY KATONA MEMORIAL OPEN SPACE

MOUNTAIN LAUREL OPEN SPACE

MILL RIVER OPEN SPACE AREAS

OLD DAM MARSH OPEN SPACE

OLDFIELD NORTH MARSH OPEN SPACE

OLDFIELD SOUTH MARSH OPEN SPACE

PEQUOT ROAD OPEN SPACE

PERRY'S MILL POND OPEN SPACE

PINE CREEK MARSH OPEN SPACE

RICHARDS BEACH OPEN SPACE

RIVERFIELD OPEN SPACE

SAMP MORTER ROCK OPEN SPACE

SASCO CREEK/KIRIK OPEN SPACE

SASCO CREEK MARSH OPEN SPACE

SASCO CREEK POND OPEN SPACE

SOUTHGATE LANE MARSH OPEN SPACE

SPRINGER GLEN OPEN SPACE

TRILLIUM ROAD OPEN SPACE

TURNEY CREEK MARSH TRACTS OPEN SPACE

WESTWAY ROAD OPEN SPACE

WOODSIDE CIRCLE OPEN SPACE

FAIRFIELD WEST CEMETERY

GREENFIELD HILL CEMETERY

OLD BURYING GROUND CEMETERY



Town of Fairfield | Parks & Recreation System Overview

Park Land (1200 acres total)

- 2 Major Active Parks (South Pine Creek & Lake Mohegan, +/- 75 acres each)
- 30 +/- Neighborhood Parks
- 5 Beaches on Long Island Sound
- 27 Open Space / Passive Parks
- 1 Lakefront Property



Amenities

- Water Spray Park
- 31 Tennis Courts (6 lighted)
- 5 Sand Volleyball Courts
- 4 Pickle Ball Courts
- 4 Bocce Courts
- 2 Outdoor Basketball Courts
- 24 Playscapes
- 13 Baseball Diamonds
- 7 Softball Diamonds (1 lighted)
- 2 Golf Courses
- 3 Marinas
- 1 Skate Park
- ADA Compliant Playground
- Multiple Fishing Areas
- Jogging Paths
- Hiking Trails



Community Outreach: Summary of Findings

- Public Workshop #1 (November 29, 2021)
- Stakeholder Engagement (Interviews/Focus Groups/Round Robin Sessions)
- Community Survey
- On-Line Public Input

Public Workshop #1: Summary of Findings

- Programming...top priorities

Offerings

One-Off Events

Information

Policies

Public Workshop #1: Summary of Findings

- **Facilities**...top priorities/needs

 - Operations and Maintenance

 - Improved maintenance (fields/courts conditions)
 - Maintain/Enhance natural landscape of sites
 - Consider future-proofing (weather, climate)
 - Security (Lake Mohegan)

 - Amenities

 - Food Trucks/Concessions
 - Comfort stations (fixed, not port-a-pots)
 - Lighting
 - ADA Accessibility upgrades

Public Workshop #1: Summary of Findings

- **Facilities**...top priorities/needs

- What's Needed

- Restaurant on the beach/waterfront
 - Facility/Field reservations should be more transparent
 - Pickleball courts (more)
 - More ballfields
 - Rugby (needs a home field)
 - Artificial turf fields
 - Emphasis on beaches rather than buildings
 - Multi-Use/Fields complex
 - Platform/Paddle Tennis
 - Ice rink
 - Community gardens (more)
 - Public pool
 - Dog park
 - Indoor complex/Fieldhouse

Public Workshop #1: Summary of Findings

- **Facilities**...top priorities/needs

- Policies

- Reservation system is cumbersome
 - Facility/Field reservations should be more transparent
 - Utilize BOE 'waterfall' for equipment/facility planning
 - Better equity on fields/facilities for girl's youth sports
 - Resident preferences for tee times at golf course
 - Space management plan

Stakeholder Engagement: Summary of Findings

- **Programming**...recurring themes/needs

- Offerings

- Enhanced water sports (public/private partnerships)
 - Outdoor activities (particularly winter)
 - Program/Activate the beaches more
 - Teen center/programming (will impact transportation needs)

- One-Off Events

- Taste of Fairfield (bring back)
 - Party boat/Sunset dinner cruises
 - Adult/Empty-nesters (more)

Stakeholder Engagement: Summary of Findings

- **Programming**...recurring themes/needs

- Information

- Community-wide information (outside of individual neighborhoods)
 - Better visibility of sites/amenities on P/R website
 - Transparency with on-line field reservations (who has what reserved and when for re-scheduling)

- Policies

- Look at programming comprehensively/holistically
 - Periodically close streets and allow restaurants to spill out into streets
 - Focus new program offerings based on High School teams (feeder programs)
 - Promote boating/marina more equitably

Stakeholder Engagement: Summary of Findings

- **Facilities**...recurring themes/needs

 - Operations and Maintenance

 - Improved maintenance (fields/courts)
 - Playgrounds need upgrades
 - Landscape contractor improvements
 - Marina improvements (revisit redesign plan ramping/lighting/safety)

 - Amenities

 - Lighting (extended play/use)
 - Boat racks (with security)
 - Biking (racks, repair stations)
 - Water-filling taps (for water bottles)

Stakeholder Engagement: Summary of Findings

- **Facilities**...recurring themes/needs

- Policies

- Skate park needs better enforcement/oversight
 - Explore public/private partnerships with Fairfield U./Sacred Heart
 - Improved coordination with Conservation (beneficial adjacencies)
 - Methodology to monetize turf sites as part of development process (Cost Benefit Analysis)
 - Methodology for 501 C 3 financial contributions for improvements
 - Cease 'permit hoarding' /penalize for non-use of field reservations
 - Develop SOPs for sports leagues (equipment damage/loss)
 - Consider climate change considerations for improvements/new designs (sustainability)
 - Address noise pollution (pickleball/basketball)
 - Consider ages of play and parking/transportation (drop-off v. parents who stay/supervise)

Stakeholder Engagement: Summary of Findings

- **Access/Connectivity/Mobility**...recurring themes/needs

 - ADA Accessibility/Universal Access

 - ADA trails (Drew Park/Lake Mohegan/Southport/Sasco Beach)
 - ADA accessibility expanded at beaches (decking/boardwalk/mats all-terrain wheelchairs)

 - Biking/Walking/Trails

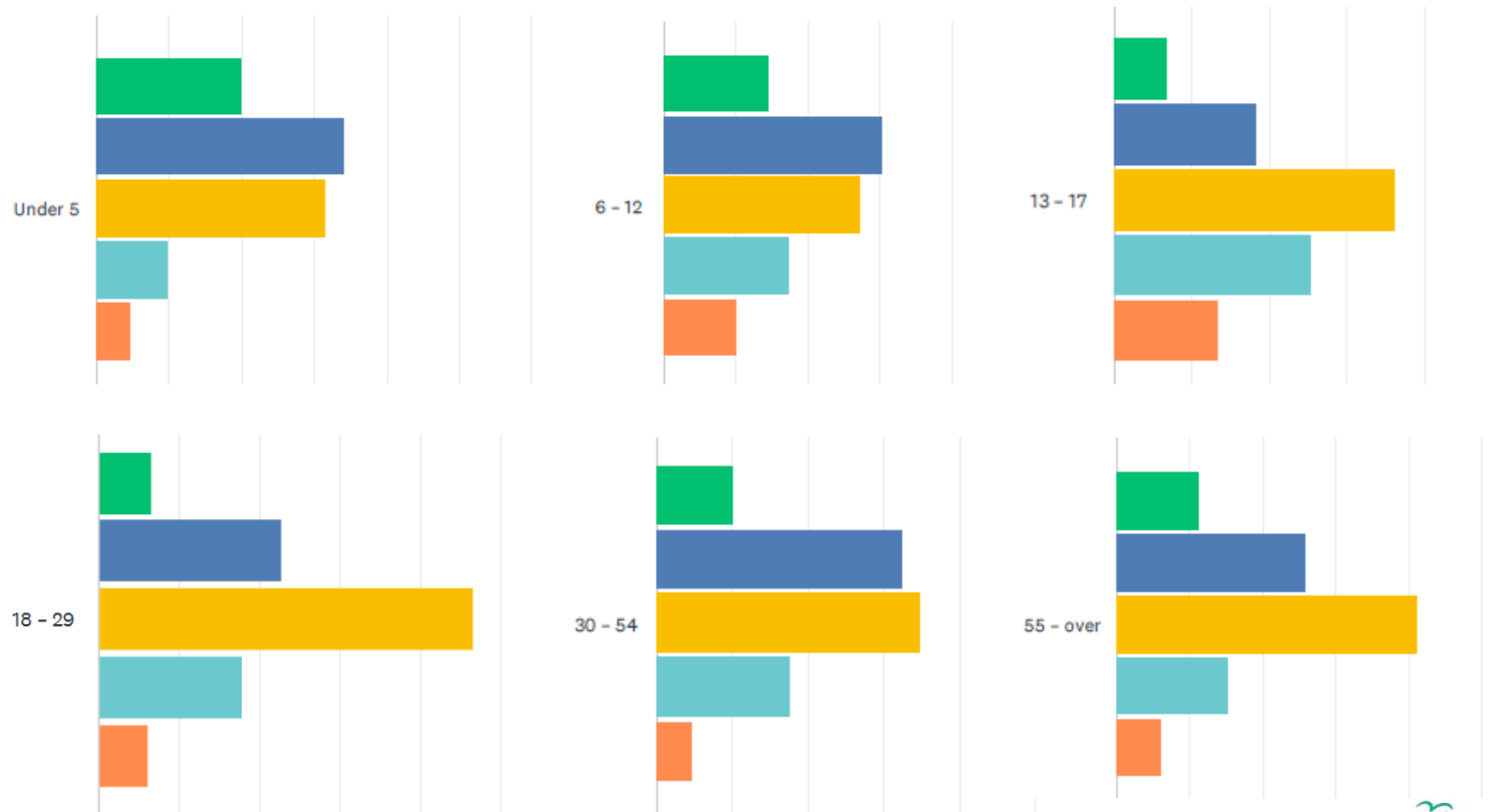
 - Trails/Trail connections between/linking sites
 - Inventory sites/map out potential connectivity
 - Consider Town trolley (loop system)
 - Consistent sidewalks throughout Town
 - Bike lane along Fairfield Beach Road
 - Pedestrian signals at major intersections

Community Survey: Summary of Findings

- List three open space, recreation facilities or places that you/your family use in Fairfield...top priorities (question #1)
 - Penfield Beach
 - Beaches
 - Jennings Beach
 - Lake Mohegan
 - Sullivan Field
 - Owen Fish Park
 - Sasco Beach
 - Veteran's Park
 - Gould Manor Park
 - Sandcastle Playground
 - Tennis Courts
 - H. Smith Richardson Golf Course

Community Survey: Summary of Findings

- How satisfied are you with existing parks/recreation facilities for the following age groups...(question #6)

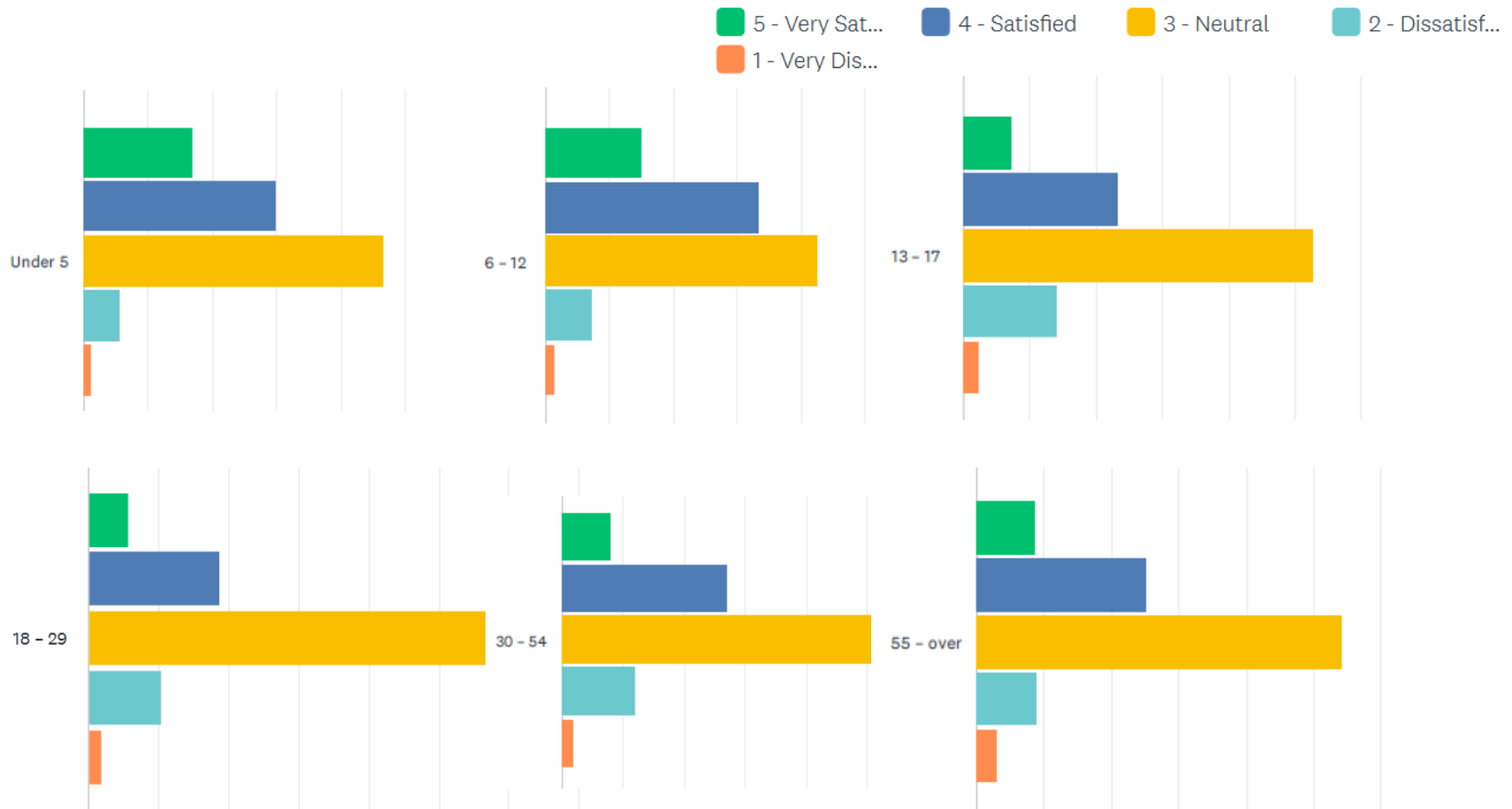


Community Survey: Summary of Findings

- List three community events/programs that you/your family have attended/participated in over the past several years in Fairfield?...top priorities (question #3)
 - Christmas events
 - Music/Comedy events
 - Beach events
 - Memorial Day events
 - Town fireworks (4th of July)
 - Soccer games
 - Baseball/Softball games
 - Football games
 - Farmer's Markets
 - Parades

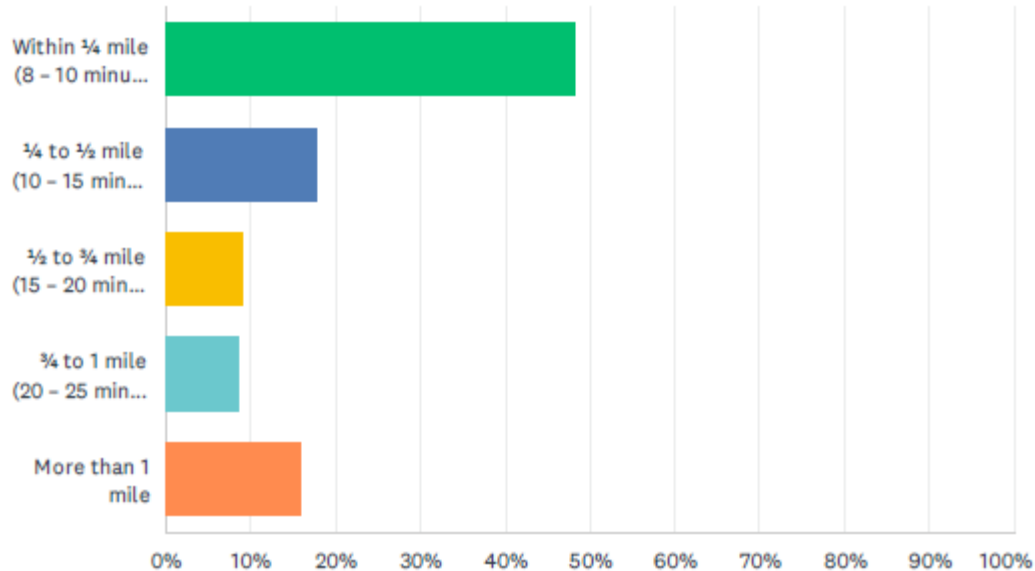
Community Survey: Summary of Findings

- How satisfied are you with recent community events/program offerings in Fairfield for the following age groups...(question #7)



Community Survey: Summary of Findings

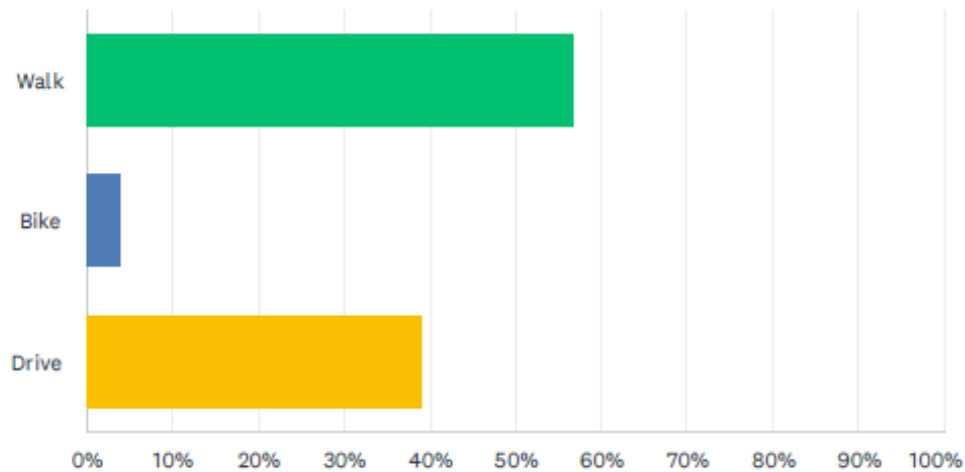
- How far is the closest park or recreation facility from your home... (question #12)



Within ¼ mile:	48%
¼ mile – ½ mile:	18%
½ mile – ¾ mile:	9%
¾ mile – 1 mile:	9%
More than 1 mile:	16%

Community Survey: Summary of Findings

- How do you usually get there?... (question #13)

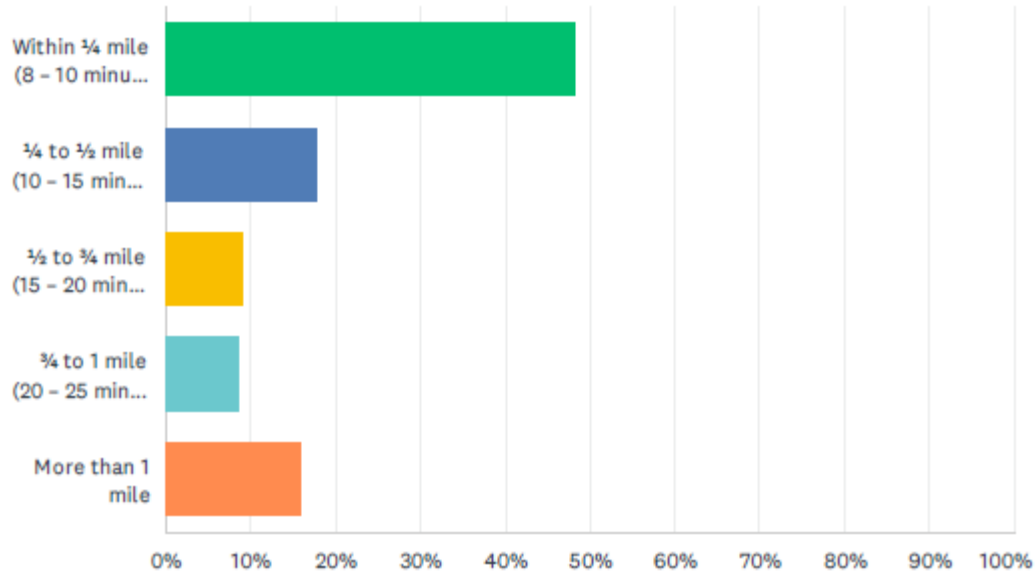


Walk: 57%
Bike: 4%
Drive: 39%



Community Survey: Summary of Findings

- How often do you visit parks or recreational areas in Fairfield...(question #14)



Every day:	12%
3 times a week:	40%
Once a week:	28%
Twice a month:	10%
Once a month:	7%
2 or 3 times a year:	3%



Community Survey: Summary of Findings

- **Programming**...top priorities/needs

 - Offerings

 - Swimming programs
 - Accessibility/Adaptive recreation programming
 - Adult programming (more)
 - Water sports/boating programs (more)
 - Winter activities

 - One-Off Events

 - Add more/enhance existing community events (general)
 - Music events (more concerts)
 - Holiday events (more)

 - Information

 - Increase visibility of sites/amenities on P/R website

 - Policies

 - Equitable focus/offerings (girls youth sports)

Community Survey: Summary of Findings

- **Facilities**...top priorities/needs

 - Operations and Maintenance

 - Improved maintenance (fields/courts conditions)
 - Enhance natural landscape of parks

 - Amenities

 - Boat rentals
 - Comfort stations
 - Trash receptacles/recycling
 - Shelter from weather/sun
 - Food trucks/Concessions
 - Field amenities (lighting, scoreboard, backstop)
 - Parking

Community Survey: Summary of Findings

- **Facilities**...top priorities/needs

- What's Needed

- Public pool
 - Pickleball facilities (more)
 - Rugby (home field)
 - Artificial turf fields
 - Dog park
 - Ice rink
 - Indoor complex/Fieldhouse
 - Basketball courts
 - Baseball fields (more)
 - Paddle courts
 - Multi-Use Fields/Complex
 - Restaurant on the beach/waterfront

- Policies

- Safety/Security
 - Dog enforcement (leash/unleash, waste pick up)

Community Survey: Summary of Findings

- **Access/Connectivity/Mobility**...top priorities/needs

ADA Accessibility/Universal Access

- ...

Biking/Walking/Trails

- Bike/Walking paths/trails
- Walking/Hiking paths

Recently Constructed Projects

- Penfield Pavilion – 2017
- Tomlinson MS Turf Replacement – 2017
- Owen Fish Park Tot Playground – 2017
- Roger Ludlow MS Field Renovation – 2017
- Sherman Elementary Soccer Field Renovation – 2017
- Veterans Park Volleyball Remodel - 2021
- H. Smith Richardson Clubhouse - 2021
- Tomlinson MS Tennis Courts - 2021
- Pine Creek Playground - 2021

Current | Planned Projects

- Gould Manor Little League Fields – 2021
- Gould Manor Playground – 2021
- Gould Manor Outdoor Fitness Park – 2021
- Gould Manor Tennis Courts – 2021
- Gould Manor Pickleball and Basketball Courts - 2021
- Mill Hill Little League Infield Rebuild – 2021
- Dover Park Playground – 2022
- Highwood Park Playground – 2022
- Lincoln Park Playground – 2022
- Melville Park Playground – 2022
- Tunxis Hill Playground – 2022
- Lake Mohegan Splash Pad – 2022
- Jennings Beach Concession Building Façade - 2022

Proposed Concepts

Proposed – Early Thoughts

- Tunxis Hill
- Dover Park
- South Pine Creek Recreation Area
- Highwood Park
- Owen Fish Park
- Dougiello Park



Tunxis Hill Park Concept

Town Input

1. Playground replacement (2022)
2. Pickleball rebuild (Future)

Public Input

1. Pickleball courts (need more)
2. Rebuild pitching mounds
3. Year-round dog park
4. Trash receptacles
5. Preserve wooded areas
6. Repair/resurface pickleball courts

Site Assessment Summary

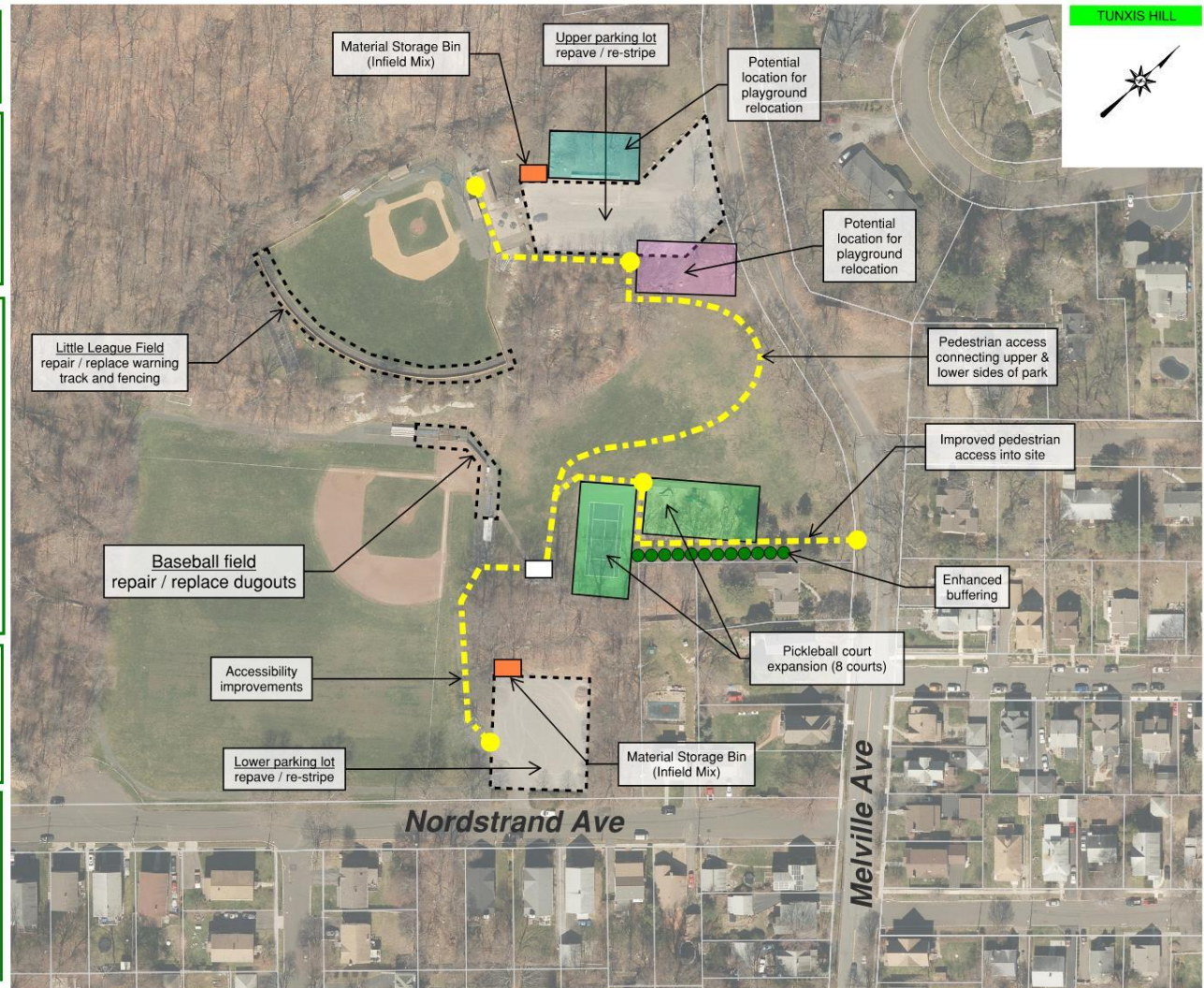
1. **Baseball field / Soccer field (lower)**
 - 1.1 dugout fencing needs repair
 - 1.2 dugout benches in below average condition
2. **Little League field (upper)**
 - 2.1 warning track gravel needs refresh
 - 2.2 outfield fence barrier needs repair
3. **Pickleball courts (4)**
 - 3.1 upcoming project to replace courts
4. **Playground**
 - 4.1 poor condition (replacement planned for 2022)
5. **Parking areas (2)**
 - 5.1 moderate cracking throughout parking areas
 - 5.2 re-striping needed
6. **ADA accessibility**
 - 6.1 improvements needed between parking areas and site amenities
 - 6.2 accessible seating options needed
 - 6.3 lower field restroom requires accessibility improvements

Existing Site Usage

Use	Annual Hours (all groups)	Use Level
Baseball Field	800	High
Soccer Field	230	Moderate
Little League Field	290	Moderate
Pickleball Courts	5,400	High

Proposed Site Improvements Summary

1. Playground relocation
2. Pickleball court expansion
3. Baseball field dugout repair
4. Little League field warning track repair
5. Parking area improvements
6. Material Storage Bins
7. ADA / Circulation improvements



Dover Park Concept

Town Input

1. Playground replacement (2022)

Public Input

1. Turf field improvements

Site Assessment Summary

1. **Little League Field**
 - 1.1 Infield and turf in good condition
 - 1.2 benches/seating needs upgrading
 - 1.3 No field fencing exists - could be considered
 - 1.4 No ADA seating options
2. **Playground**
 - 2.1 poor condition (replacement planned for 2022)
3. **Picnic area**
 - 3.1 Existing pavilion needs repair or replacement
4. On-street parking only
5. ADA / accessibility improvements needed
6. Former basketball area on-site should be repurposed

Existing Site Usage

Use	Annual Hours	Use Level
Little League Field	230	Low

Proposed Site Improvements Summary

1. Little League Field perimeter fencing
2. Pickleball Courts (2)
3. Half basketball court
4. Multi-Use Small Open Field (conversion from former volleyball area)
5. Picnic area pavilion replacement
6. Canopy trees along Stevenson Rd
7. Playground replacement (2022)



South Pine Creek Recreation Area Concept

SHORE AREA



Town Input

-Turf Fields scheduled to be built in 2023

Public Input

- Artificial turf (Sullivan Field)
- Cross walks
- Traffic/ safety improvements
- Trail safety improvements

Site Assessment Summary

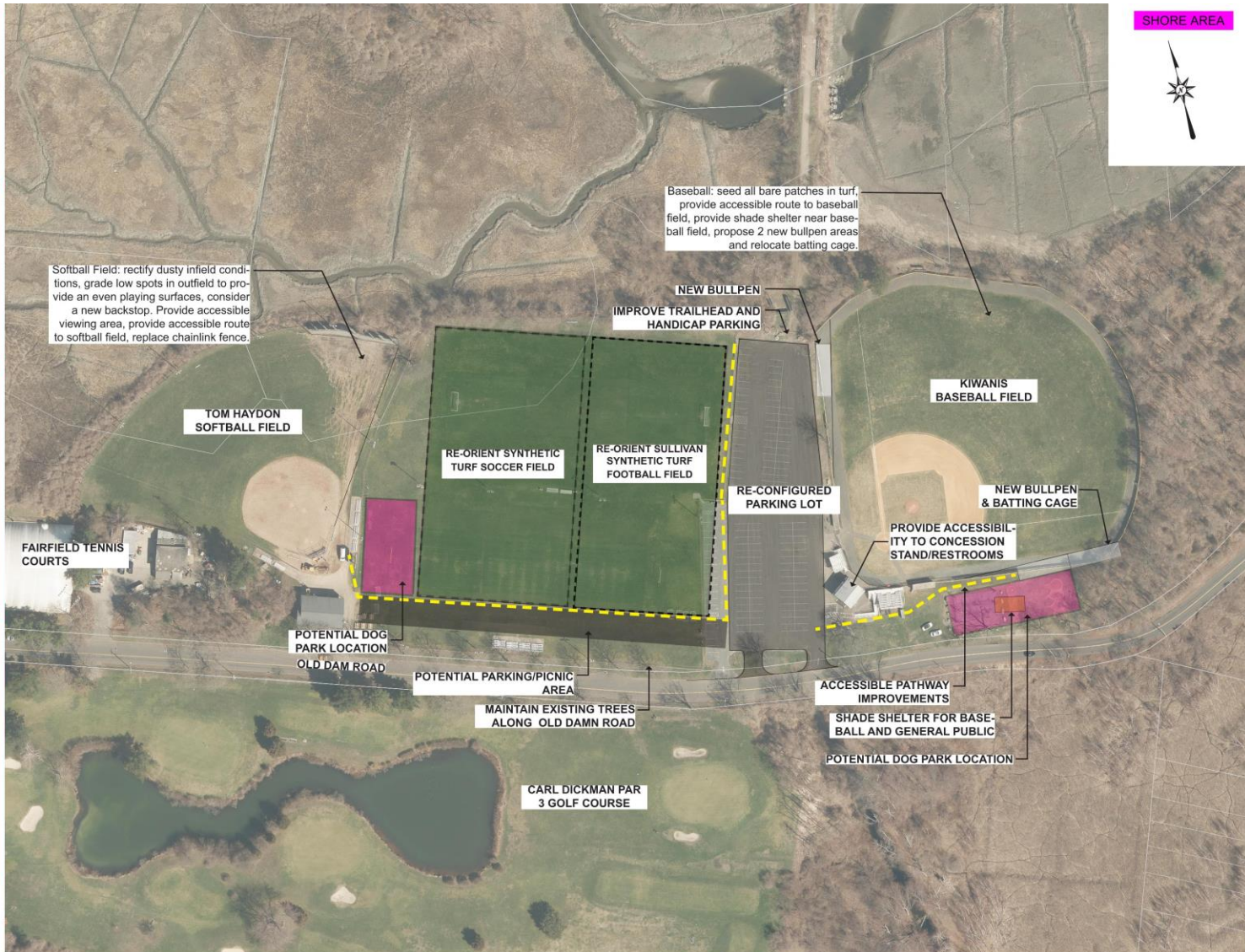
1. Softball Field- Outfield has bare patches in turf. Backstop is low and does not seem like it will stop many foul balls, chainlink fence is in need of repair.
2. Soccer Field- chain link fence is in poor condition, lawn is very patchy and uneven, field is currently in a poor orientation (East-West), the field is not ada accessible.
3. Football Field- Turf is very patchy and uneven, lights are inefficient and dated on telephone poles.
4. Baseball Field- Outfield has bare patches in turf.

Existing Site Usage

1. Soccer Field (Medium Use)
 - FUSA: 469.5 hours annually
 - FLHS: 12 hours annually
 - Total of 481.5 hours annually
2. Football Field: Sullivan Field (High Use)
 - FYF: 1074 hours annually
3. Baseball Field: Kiwanis Field (High Use)
 - FLHS: 216 hours annually
 - Rage: 93 hours annually
 - Legion: 267.5 hours annually
 - Batting Cage: 36
 - Total of 612.5 hours annually
4. Softball Field: Haydon Field (Medium Use)
 - Adult Softball: 157.5 hours annually
 - FLLGSB: 254 hours annually
 - Total of 411.5 hours annually

Proposed Improvements Summary

- Soccer Field: Re-orient soccer field (200'x360'), provide spectator viewing area, provide accessibility pathway to field.
- Sullivan Field: Re-orient football field, provide spectator viewing area, provide accessibility pathway to field, consider new lighting
- Parking Lot: -Reconfigure parking lot striping and layout
- Provide accessible pathways to soccer/football fields from parking lot.
- Propose additional parking/ picnic facilities
- Provide ada accessibility to all buildings on site.
- Softball Field: rectify dusty infield conditions, grade low spots in outfield to provide an even playing surfaces, consider a new backstop. Provide accessible viewing area, provide accessible route to softball field, replace chainlink fence.
- Baseball: seed all bare patches in turf, provide accessible route to baseball field, provide shade shelter near baseball field, propose 2 new bullpen areas and relocate batting cage.
- Dog park opportunities



Highwood Park Concept

BLACK ROCK



Town Input

1. Current Project:
-Highwood playground improvements

Public Input

- upgrade playgrounds
- walking path upgrades

Site Assessment Summary

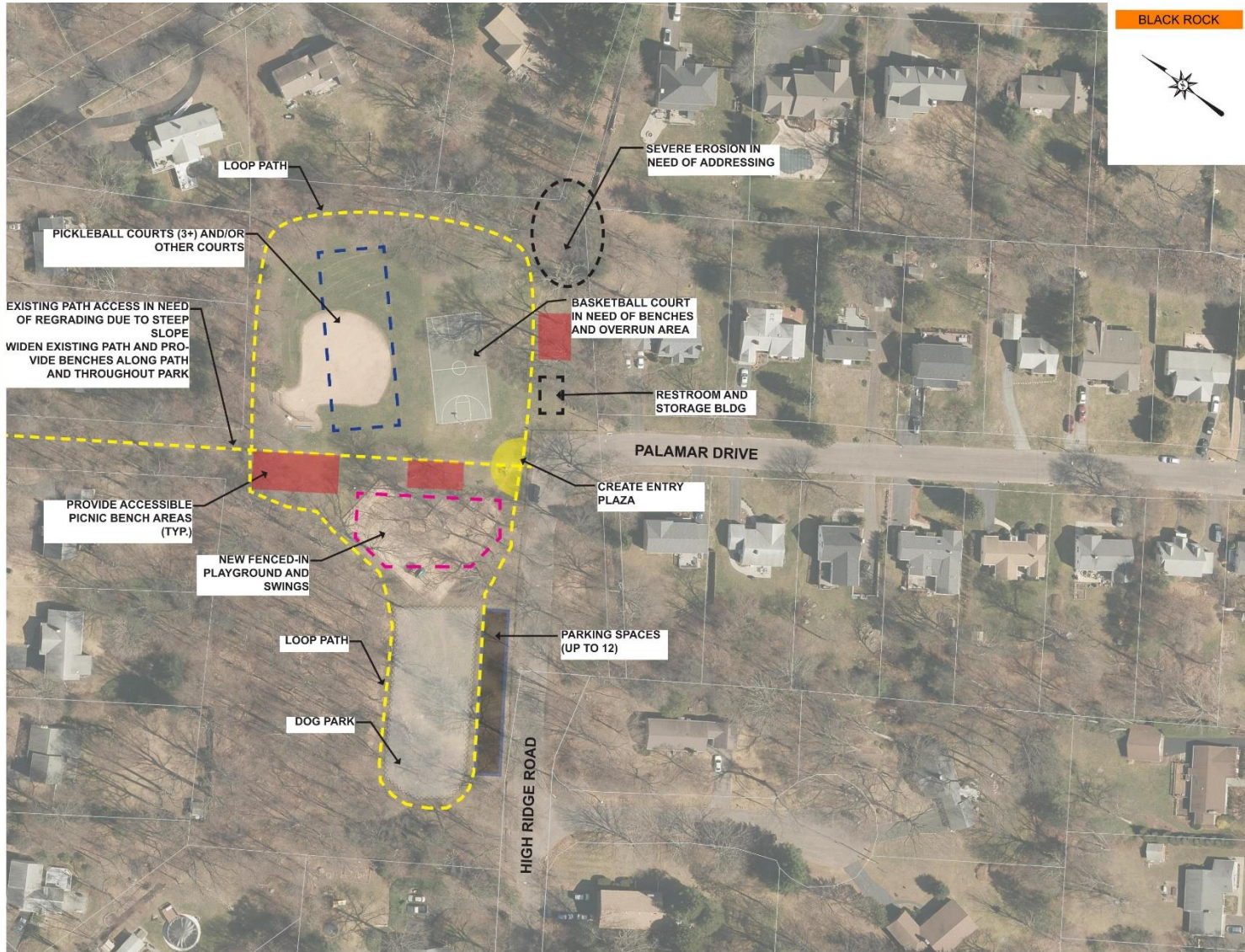
- Parking: No striping or HC signage on street, Flush conditions from street to park and pathway.
- Pathways: Path is largely flat but cracked except at entrance to Lakeview Dr. where there is a 9% slope of the path.
- Benches: eclectic range of style and ages, two could use replacing and more in total number are needed.
- Picnic Facilities: Tables appear to get dragged around park as needed.
- Playground facilities: some of the play equipment and one swing may be ADA compliant but the wood chip ground is not an accessible surface.
- Little League Field: looks to be in good condition, absence of spectator seating areas and dugout fencing.
- Basketball court sufficiently good condition for casual play, large crack down center nets and poles in fair/good condition
- Overall: park is lacking enough seating or gathering areas. Patrons observed using the ball field benches as gathering area.

Existing Site Usage

1. Little League Field (Low Use)
-FNLL: 151 hours annually

Proposed Improvements Summary

- Accessible pathway enhancements
- Propose accessible picnic bench areas
- New fenced-in playground and swings
- Propose loop path
- Propose new entry plaza
- Propose new restroom and storage building
- Propose sediment and erosion control remedies on site.
- Due to low use, consider removing little league field and replacing with 3+ pickleball and/or other courts.
- Dog park



HIGHWOOD PARK, 330 PALAMAR DRIVE
CONCEPT PLAN



Owen Fish Park Concept



Town Input

- Recently Added:
 - Owen Fish Tot Playground
 - Owen Fish Restrooms

Public Input

- Half marathon based out of park
- Upgrade playground
- Club house for teens
- Rebuild pitching mounds
- Field upgrades
- Repair/replace benches
- Fence in Playground

Site Assessment Summary

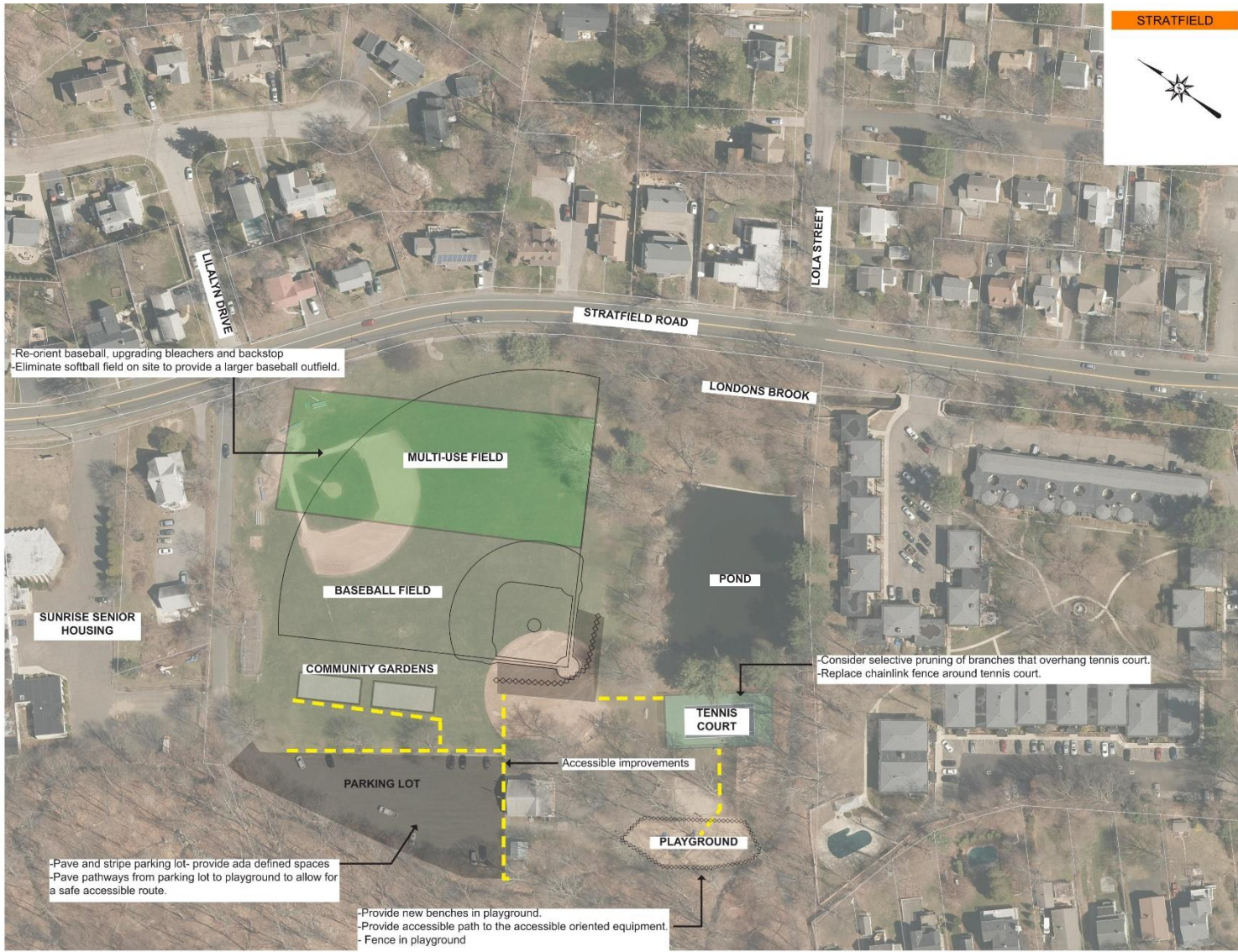
- Softball Field- Field (lawn, clay mix), and surrounding elements appear to be in fair condition.
- Baseball Field- backstop and bleachers are in poor condition
- Tennis Court- Pavement is in fair condition. Fence around tennis court has been damaged by some falling tree limbs.
- Playground-- there are no accessible pathways to accessible oriented play equipment

Existing Site Usage

- Softball (Low Use)
 - FNLL: 130 hours annually
 - Rec Softball: 17.5 hours annually
 - Total of 147.5 hours annually**
- Baseball (High Use)
 - FLHS: 216 hours annually
 - Babe Ruth: 401 hours annually
 - Rage: 86 hours annually
 - Total of 703 hours annually**
- Tennis (High Use)
 - Permits 4/1-11/30: **1,001 total hours annually**

Proposed Improvements Summary

- Consider widening driveway and enhance visibility in and out of site.
- Pave and stripe parking lot- provide ada defined spaces
- Pave pathways from parking lot to playground to allow for a safe accessible route.
- Provide new benches in playground.
- Provide accessible path to the accessible oriented equipment.
- Fence in playground
- Re-orient baseball, upgrading bleachers and backstop
- Eliminate softball field on site to provide a larger baseball outfield.
- Consider selective pruning of branches that overhang tennis court.
- Replace chainlink fence around tennis court.
- Propose multi-use field



OWEN FISH PARK, 1443 2-STRATFIELD ROAD
CONCEPT PLAN



Dougiello Park Concept

Town Input

1. Softball parking lot paving (2022)
2. Softball Field lights (2023)

Public Input

1. Field Lighting
2. 2nd softball field
3. Artificial turf (for soccer and softball)
4. Basketball courts
5. Baseball field
6. Ice skating

Site Assessment Summary

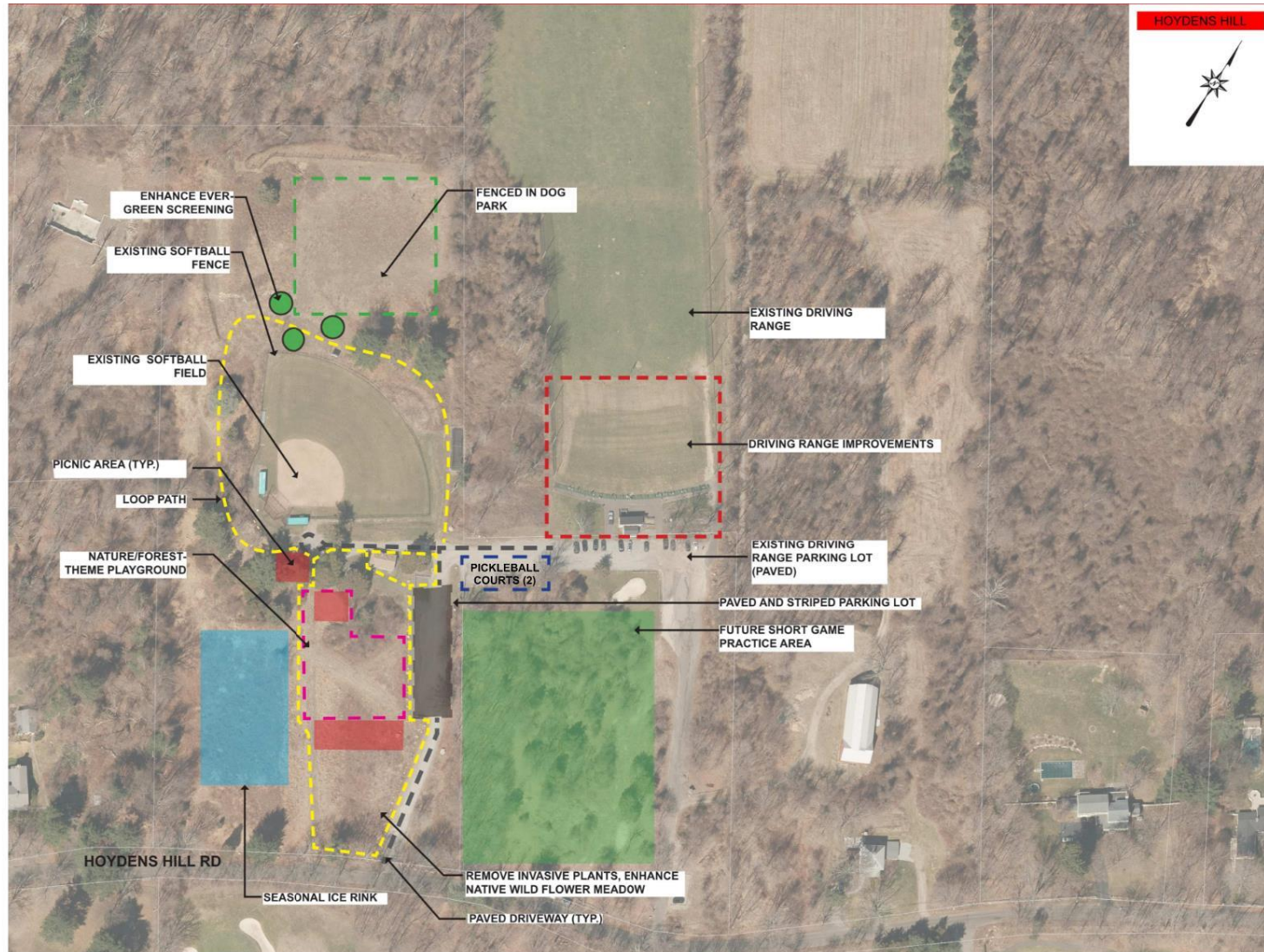
- 1. Softball field**
 - 1.1 accessible seating not available
 - 1.2 field turf and infield in good condition
- 2. Concession stand**
 - 2.1 average-good condition
- 3. Announcers box**
 - 3.1 good condition
- 4. Batting cage**
 - 4.1 average-good condition
- 5. Storage shed**
 - 5.1 good condition
- 6. Parking and driveway**
 - 6.1 gravel surfacing not currently accessible

Existing Site Usage

Use	Annual Hours	Use Level
Softball Field (FLLGSB)	630	High

Proposed Site Improvements Summary

1. Accessible loop path and connections to ADA parking
2. Paved and striped parking lot and paved driveway and drop off loop.
3. Forest themed playground
4. 2 Pickleball Courts
5. Fenced-in dog park
6. Enhanced picnic area
7. Enhanced evergreen buffer and wildflower meadow.
8. Seasonal ice rink.
9. Future short game practice area.
10. Driving range improvements.



DOUGIELLO PARK, 520 HOYDENS LANE
CONCEPT PLAN



Summary of Public Input

Summary of Public Input

- Dog Parks
- Pickleball Courts
- Synthetic Turf Multi-use fields
- Field improvements
- Basketball Courts
- Ice Skating Rink
- Community Garden Area
- Walking Trails | Loop Paths
- Picnic Areas
- Additional Parking Areas



Summary of added facilities (these five sites only)

- + 3 Dog Parks
- + 11 Pickleball Courts
- + 2 Synthetic Turf Multi-use fields
- + 5 Field Improvements
- + ½ Basketball Courts
- + 1 Ice Skating Rink
- + 1 Playground
- + 1 Community Garden Area
- + 3 Walking Trails | Loop Paths
- + 6 Picnic Areas
- + 4 Additional Parking Areas
- 2 Underutilized Ball Fields